



Bernalillo County Commissioner Report

September 30, 2015



Index

	Page
Bernalillo County patient encounters by funding source	3
Financial assistance to patients by county	4
UNM Care and UNMCI enrollment and numbers assigned to First Choice	5
Emergency room data on patients leaving without being seen and average hours from arrival to disposition	6
Number of FTE's and retention rate for RN, pharmacy, pulmonary, physical therapist and radiology technicians	7
Quarterly statement of net assets	8
Quarterly statement of revenues, expenses and changes in net assets	9
A Number of indigent Bernalillo County resident <i>outpatients</i> broken out by zip code and the cost of care for such patients	10
B Number of indigent Bernalillo County resident <i>inpatients</i> broken out by zip code and the cost of care for such patients	10
C Primary Services provided to Bernalillo County residents by primary service type	11
D Primary reasons for Bernalillo County indigent resident visits	12
E Emergency room wait times for Bernalillo County residents	10
G Number of County residents applying for and approved for financial assistance	13
UH and Behavioral Statistics	14
2015 Revenue by Payor	15
2015 Mill Levy Expense	16
2015 Mill Levy Expense by Specialty	17
2015 Mill Levy Expense - Behavioral Only	18
Financial Assistance Enrollment Trends	19

**Encounters - Bernalillo County
 For the three months ended September 30, 2015**

Source	Bernalillo County Encounters
Charity Care - Bernalillo County	1,848
EMSA	154
IHS	547
Medicaid	70,604
Medicare	44,751
Uninsured	9,145
HMO's & Insurance	42,434
All Other	8,244
Total Encounters	<u>177,727</u>

Native American Encounters **15,799**

Encounters - Bernalillo County consist of Inpatients and Outpatients who provided a Bernalillo County zip code during their registration. Categories are based on Primary Payer Code. Native American Encounters are based on race as provided during registration, are not restricted to only Bernalillo County zip codes and could be duplicate of the Bernalillo encounters by payer above.

Financial Assistance to Patients by County*
For the three months ended September 30, 2015

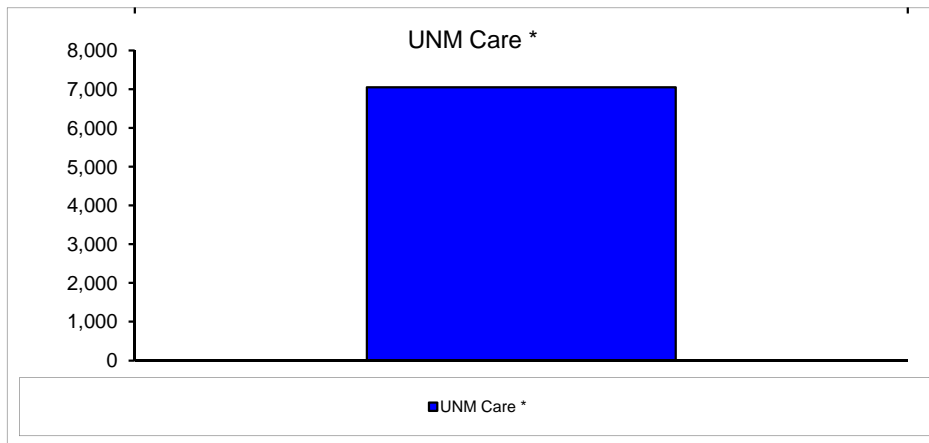
County	Charity Care Cost	Uninsured Cost	Total Uncompensated Care Cost
Bernalillo	10,812,320	\$ 4,926,418	\$ 15,738,738
Catron	6,322	-	6,322
Chaves	1,010	20,602	21,611
Cibola	2,211	155,853	158,065
Colfax	1,668	12,769	14,436
Curry	1,560	24,622	26,182
De Baca	105	-	105
Dona Ana	4,579	11,978	16,557
Eddy	6,945	87,523	94,468
Grant	7	9,490	9,497
Guadalupe	464	9,132	9,596
Harding	-	-	-
Hidalgo	-	-	-
Lea	42,364	21,603	63,966
Lincoln	310	4,225	4,535
Los Alamos	-	1,142	1,142
Luna	110	993	1,103
Mc Kinley	116	111,650	111,766
Mora	-	3,310	3,310
Otero	3,703	-	3,703
Quay	-	170	170
Rio Arriba	690	19,868	20,558
Roosevelt	-	18,239	18,239
San Juan	700	63,668	64,369
San Miguel	1,848	6,793	8,641
Sandoval	52,825	449,779	502,605
Santa Fe	12,867	89,765	102,632
Sierra	2,896	1,848	4,744
Socorro	1,778	14,193	15,970
Taos	119,368	82,514	201,882
Torrance	2,817	58,319	61,136
Union	-	19,246	19,246
Valencia	59,774	560,474	620,248
Out Of State	-	507,649	507,649
Grand Total	\$ 11,139,357	\$ 7,293,835	\$ 18,433,192

* Based on collection

Total Uncompensated Care Cost: Cost of care for UNM Hospitals is the actual cost of providing care - salary, benefits, supplies, drugs, blood, organs, utilities, depreciation, contracts, services.

**UNM Care
 As of September 2015**

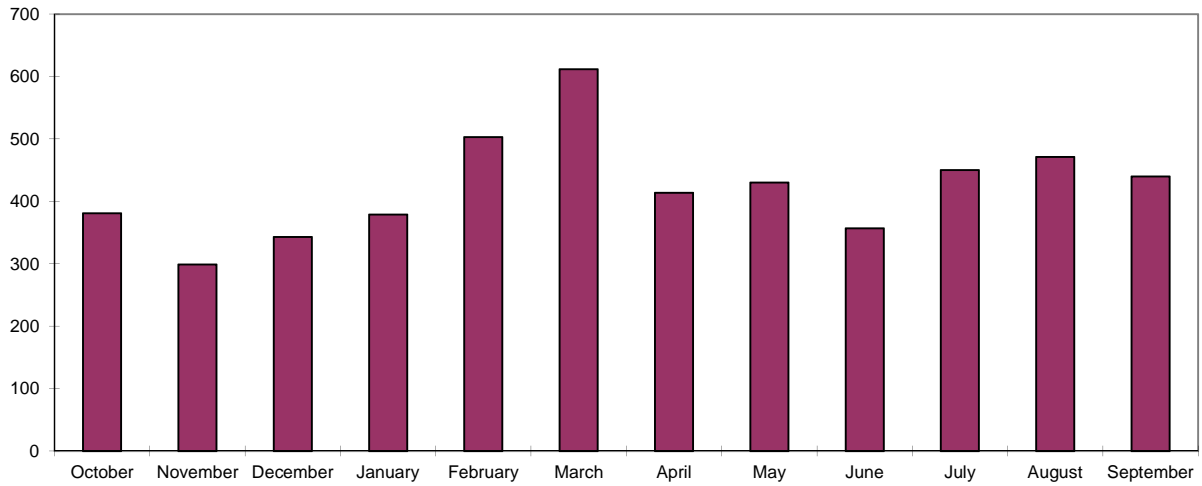
Category	Enrollment
UNM Care *	7,048



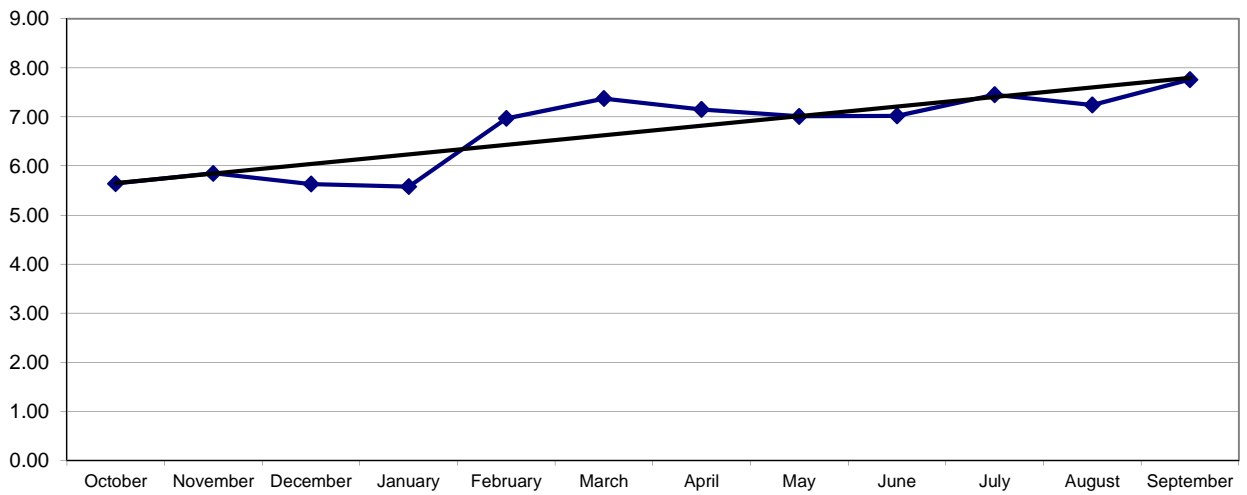
* UNM Care includes 181 Native American Enrollees as of 9/30/2015.

**Emergency Services
 For the Twelve months ending September 30, 2015**

Patients left without being seen



Average Hours from Arrival to Disposition





**Number of FTE's and Retention Report
For the three months ended September 30, 2015**

Category	Number of FTE's as of June 2015	Number of FTE's as of September 2015	Hires Headcount	Terms Headcount	Rolling Retention Rate
RN's	1,867	1,895	86	81	84.90%
Pharmacy	167	191	16	8	80.59%
Pulmonary	71	76	1	2	94.84%
Physical Therapists	48	60	3	-	94.71%
Radiology Techs	140	142	6	6	89.59%

NOTE: The number of FTE's for selected categories is listed above; however, it should be noted that the retention rate is calculated using the hires and terms for each respective category.

Statements of Net Assets

September 30, 2015 and June 30, 2015

Assets	September 2015	June 2015 Unaudited
<i>(In Thousands)</i>		
Current assets:		
Cash and cash equivalents	\$ 138,313	146,491
Marketable securities	34,619	34,558
Receivables:		
Patient, net	138,978	134,264
University of New Mexico	397	780
Estimated third-party payor settlements	19,905	37,259
Bernalillo County treasurer	22,355	1,668
Other	24,700	21,378
Total current assets	<u>379,267</u>	<u>376,398</u>
Noncurrent assets:		
Assets whose use is limited:		
Held by trustee	19,513	15,072
By UNM Hospital Clinical Operations Board	21,482	21,453
Capital assets, net	<u>238,383</u>	<u>239,294</u>
Total assets	<u>658,645</u>	<u>652,217</u>
Liabilities		
Current liabilities:		
Accounts payable	43,587	49,723
Payable to University of New Mexico	65,368	71,056
Estimated third-party payor settlements	42,078	34,795
Interest payable bonds	1,227	427
Other accrued liabilities	56,374	53,775
Total current liabilities	<u>208,634</u>	<u>209,776</u>
Bonds payable	<u>121,743</u>	<u>115,000</u>
Total liabilities	<u>330,377</u>	<u>324,776</u>
Net Assets		
Restricted for expendable grants, bequests, and contributions	15,361	14,980
Restricted for trust indenture and debt agreement	18,432	14,347
Unrestricted Total net assets	171,092	173,820
Assets invested in capital	<u>123,383</u>	<u>124,294</u>
Total net assets	<u>\$ 328,268</u>	<u>\$ 327,441</u>

UNM HOSPITALS

Statements of Revenues, Expenses, and Changes in Net Assets

For the three months ended September 30, 2015

<i>(In Thousands)</i>	September 2015	June 2015 Unaudited
Operating revenues:		
Net patient service	\$ 228,462	911,755
Other	6,132	26,407
Total operating revenues	<u>234,594</u>	<u>938,162</u>
Operating expenses:		
Employee Compensation and Benefits	115,069	430,997
Medical services	44,905	164,259
Medical supplies	38,079	141,718
Occupancy/Equipment/Depreciation	22,441	90,316
Purchased services	14,541	54,717
Other	6,838	22,598
Total operating expenses	<u>241,873</u>	<u>904,605</u>
Operating loss	<u>(7,279)</u>	<u>33,557</u>
Nonoperating revenues (expenses):		
Bernalillo County Mill Levy	23,304	93,249
State appropriation	3,139	12,526
Investment income (dividends, gains and losses)	164	15,908
Interest Expense	(800)	(6,868)
Other Expense	(19,178)	(131,168)
Land and Permanent Fund	213	820
Bequests and contributions	1,264	2,578
Net nonoperating revenues	<u>8,106</u>	<u>(12,955)</u>
Increase in net assets	827	20,602
Net assets, beginning of year	327,441	306,839
Net assets, end of year	\$ <u><u>328,268</u></u>	<u><u>327,441</u></u>

Financial Assistance to Bernalillo County Patients by Zip Code
For the three months ended September 30, 2015

- A - Number of Indigent Bernalillo County resident outpatients by zip code and cost of care
B - Number of Indigent Bernalillo County resident inpatients by zip code and cost of care
F - Total cost of care for Bernalillo County indigent patients by zip code with cost methodology

Bernalillo County Zip	Inpatient Count	Inpatient Charity Care and Uninsured Cost	Outpatient Count	Outpatient Charity Care and Uninsured Cost	Total Patient Count	Total Patient Charity Care and Uninsured Cost
87008	-	\$ -	38	\$ 9,652	38	\$ 9,652
87022	-	-	101	18,246	101	18,246
87047	-	-	68	40,393	68	40,393
87059	9	132,488	167	114,774	176	247,262
87101	2	10,920	14	4,711	16	15,631
87102	47	253,532	1,358	631,146	1,405	884,678
87103	1	-	33	8,551	34	8,551
87104	17	100,688	617	385,615	634	486,302
87105	119	906,416	5,675	1,294,349	5,794	2,200,765
87106	29	44,597	1,041	609,351	1,070	653,948
87107	49	391,963	1,449	626,960	1,498	1,018,922
87108	82	347,031	2,685	1,093,478	2,767	1,440,509
87109	38	370,150	1,169	495,710	1,207	865,860
87110	43	199,144	1,293	426,349	1,336	625,493
87111	23	290,690	866	396,758	889	687,448
87112	39	134,976	1,252	709,178	1,291	844,154
87113	11	80,455	352	120,501	363	200,956
87114	29	33,606	1,008	353,885	1,037	387,491
87115	-	-	3	368	3	368
87116	3	30,000	19	26,934	22	56,934
87117	-	-	-	-	-	-
87119	-	-	15	28	15	28
87120	37	49,939	1,244	423,305	1,281	473,244
87121	115	520,421	4,529	2,004,473	4,644	2,524,895
87122	2	546	172	49,069	174	49,616
87123	45	279,924	1,819	718,817	1,864	998,741
87125	2	35,705	89	57,608	91	93,313
87131	1	-	13	27,177	14	27,177
87151	1	57,408	15	2,206	16	59,614
87153	-	-	2	-	2	-
87154	-	-	25	32,867	25	32,867
87158	-	-	-	-	-	-
87176	-	-	68	10,369	68	10,369
87181	-	-	24	10,243	24	10,243
87184	1	2,295	8	15,895	9	18,190
87185	-	-	2	-	2	-
87187	-	-	2	109	2	109
87190	1	674,733	17	1,486	18	676,220
87191	-	-	23	2,048	23	2,048
87192	1	2,295	41	5,627	42	7,923
87193	1	-	43	4,443	44	4,443
87194	-	44	20	909	20	953
87195	2	8,465	61	24,267	63	32,732
87196	-	-	20	1,212	20	1,212
87197	2	2,295	46	6,831	48	9,126
87198	-	-	46	3,453	46	3,453
87199	-	-	47	8,661	47	8,661
Grand Total	752	\$ 4,960,726	27,599	\$ 10,778,011	28,351	\$ 15,738,738



C - Financial Assistance to Bernalillo County Patients by Service Type
For the three months ended September 30, 2015

Bernalillo County Zip	Cancer Count	Medicine Count	Pediatrics Count	Surgery Count	Emergency Medicine Count	Neurology Count	OBGYN Count	Orthopedics Count	Psychiatry Count	Other Count	Total Count
87008	7	18	-	3	1	4	-	3	4	-	40
87022	16	49	-	8	6	5	1	1	14	1	101
87047	3	36	-	1	10	1	2	6	5	5	69
87059	15	96	-	8	7	12	6	2	27	3	176
87101	-	8	-	-	3	-	1	1	3	-	16
87102	74	730	3	73	100	72	56	18	261	18	1,405
87103	1	16	1	1	-	5	1	-	7	2	34
87104	26	370	-	36	34	21	32	8	89	18	634
87105	231	1,883	5	205	172	203	182	60	608	79	3,628
87106	35	550	1	69	58	50	54	43	187	23	1,070
87107	82	776	2	91	53	98	85	30	259	22	1,498
87108	116	1,455	1	140	133	146	132	61	516	67	2,767
87109	64	613	3	67	96	73	53	30	181	27	1,207
87110	67	668	-	60	60	89	46	30	277	39	1,336
87111	72	398	-	52	54	70	23	20	179	21	889
87112	70	646	4	77	60	87	68	22	227	30	1,291
87113	25	172	1	32	19	19	27	13	40	15	363
87114	96	491	1	64	32	77	52	19	186	19	1,037
87115	-	-	-	-	-	1	-	-	2	-	3
87116	1	11	-	3	1	-	1	1	1	-	19
87117	-	-	-	-	-	-	-	-	-	-	-
87119	-	6	-	1	-	8	-	-	-	-	15
87120	138	673	1	66	54	72	41	27	193	16	1,281
87121	310	4,767	10	228	236	269	313	66	460	151	6,810
87122	25	75	-	9	7	8	2	2	42	4	174
87123	119	1,073	3	103	89	97	86	24	230	40	1,864
87125	12	41	-	-	6	7	1	1	18	5	91
87131	-	6	1	-	2	1	-	-	4	-	14
87151	1	4	-	-	3	-	-	2	6	-	16
87153	-	2	-	-	-	-	-	-	-	-	2
87154	3	13	-	1	3	2	2	1	-	-	25
87158	-	-	-	-	-	-	-	-	-	-	-
87176	2	39	-	9	4	3	-	6	5	-	68
87181	2	13	-	6	-	2	-	-	1	-	24
87184	1	5	-	-	-	1	-	-	-	2	9
87185	-	2	-	-	-	-	-	-	-	-	2
87187	2	-	-	-	-	-	-	-	-	-	2
87190	5	9	-	1	-	2	-	-	1	-	18
87191	5	8	-	6	-	1	-	2	1	-	23
87192	7	25	-	2	-	1	-	-	6	-	42
87193	3	28	-	1	2	3	5	1	-	1	44
87194	-	6	-	4	-	2	4	2	2	-	20
87195	8	30	-	8	6	5	-	1	5	-	63
87196	-	12	-	2	-	-	-	-	6	-	20
87197	2	27	-	4	1	3	-	2	9	-	48
87198	3	24	-	3	2	1	2	2	9	-	46
87199	5	25	-	1	-	2	1	1	10	2	47
Grand Total	1,654	15,899	37	1,445	1,314	1,523	1,279	508	4,081	611	28,351

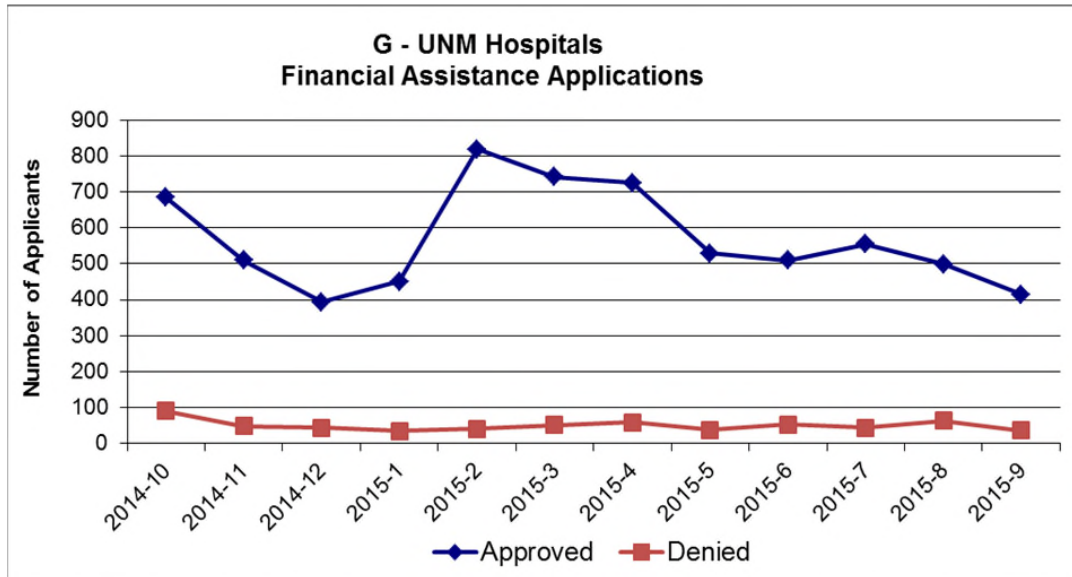
Includes inpatient and outpatient

**D - Primary Reason for Bernalillo County Indigent Resident Visits
For the 18 months ended September 30, 2015**

Description	Count of Visits						Examples of Illnesses
	Q1 FY16	Q4 FY15	Q3 FY15	Q2 FY15	Q1 FY15	Q4 FY14	
Factors Influencing Health Status and Contact with Health Service	4,635	7,838	4,544	4,121	4,002	3,101	Routine exam, follow up to surgery, child and infant wellness checks, supervision of pregnancy, monitoring of anticoagulant or c
Mental Disorders	3,971	4,344	4,160	2,268	3,836	2,869	Alcohol abuse, depression, post traumatic stress disorder
Diseases of Musculoskeletal and Connective Tissue	2,369	3,136	2,363	2,593	3,579	2,364	Joint pain, back pain, pain in limb, arthritis
Signs, Symptoms and Ill-Defined Conditions	2,294	3,396	1,514	3,053	3,417	3,274	Abdominal pain, chest pain, cough, headache, rash, shortness of breath
Diseases of Nervous System and Sense Organs	1,541	2,457	2,517	2,391	3,021	2,297	Sleep Apnea, ear infection, carpal tunnel, diseases of the eye, migraine
Endocrine, Nutritional, and Metabolic Diseases and Immunity Dis	1,486	2,506	1,548	1,689	2,423	1,881	Diabetes, high blood cholesterol, diseases of thyroid
Diseases of Circulatory System	1,340	1,748	1,769	1,504	2,095	1,526	Hypertension, heart failure, etc.
Injury and Poisoning	1,326	1,775	1,455	1,844	2,036	1,583	Bone fractures, sprains, wounds, contusions (bruises)
Diseases of Genitourinary System	1,224	1,789	1,352	1,685	1,979	1,509	Urinary tract infection, kidney stones, kidney disease
Neoplasms (abnormal new growth of tissue)	1,195	1,652	1,323	1,186	1,858	1,245	Cancer, benign growths
Diseases of Digestive System	712	1,942	1,197	970	1,375	1,294	Esophageal reflux, hernia, diseases of colon, diseases of liver
Diseases of Respiratory System	656	963	939	801	1,337	992	Sore throat, respiratory infection, sinusitis, asthma, pneumonia
Complications of Pregnancy, Childbirth, and the Puerperium	645	903	589	570	967	726	
Diseases Skin and Subcutaneous Tissue	525	917	657	551	882	929	Psoriasis, cellulitis and abscess
Diseases of Blood and Blood Forming Organs	159	359	278	232	428	374	Anemia, etc.
Infectious and Parasitic Diseases	133	179	127	171	209	173	Hepatitis, viral infections
Congenital Anomalies	76	190	49	58	86	64	
Newborn (Perinatal)	43	121	82	37	47	91	
Other (prescription pick-up, etc.)	4,021	4,938	2,582	2,897	3,121	2,991	
Total Visits	28,351	41,153	29,045	28,621	36,698	29,283	

Consists of indigent patients who provided a Bernalillo County zip code during their registration. Categories are based on CMS diagnosis codes.

For the twelve months ended Sep 30, 2015



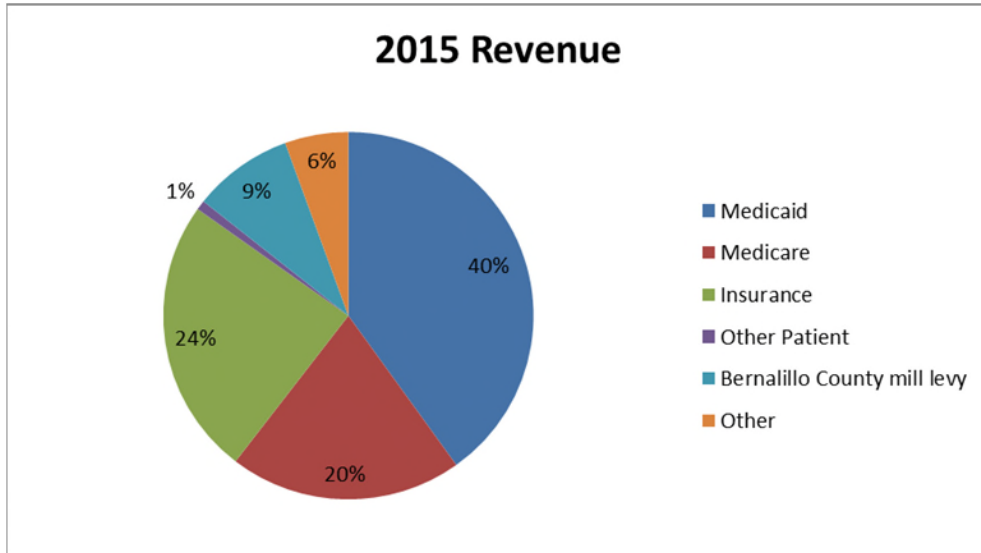


UH Statistics
FY15 and FY16 as of September 30, 2015

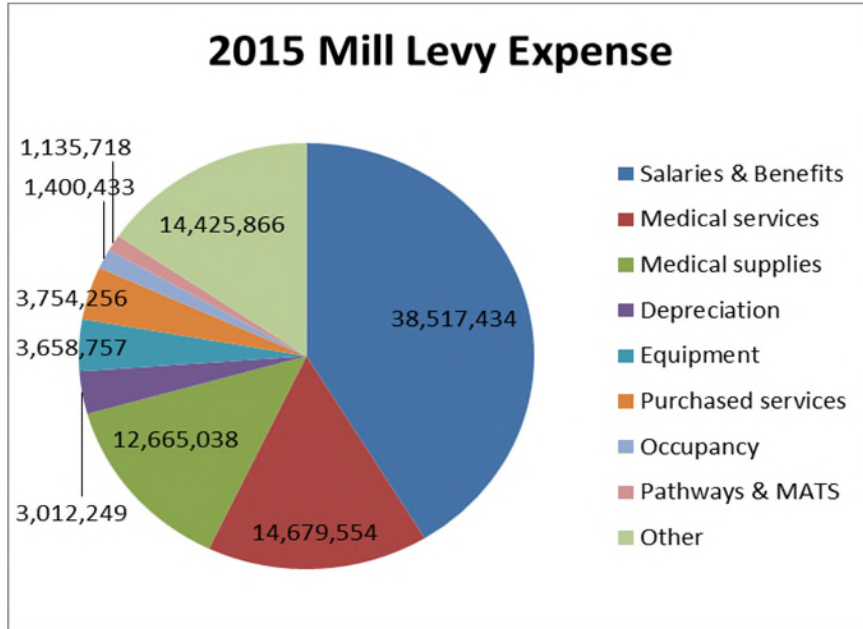
	FY16 Actual	FY15 Actual
Patient Days		
Adult	28,033	113,948
Pediatric	9,887	41,665
Newborn	1,371	4,899
Total Patient Days	39,291	160,512
Other Stats		
Clinic Visits	131,144	488,423
Emergency/Urgent Care	24,281	103,724
Operations	5,118	19,460
Births	799	2,979

Behavioral Statistics
FY15 and FY16 as of September 30, 2015

	FY16 Actual	FY15 Actual
Patient Days	5,990	24,126
Other Stats		
Outpatient visits	8,841	40,681
Midlevel	22,974	93,871
Methadone & Buprenorphine	36,054	137,423



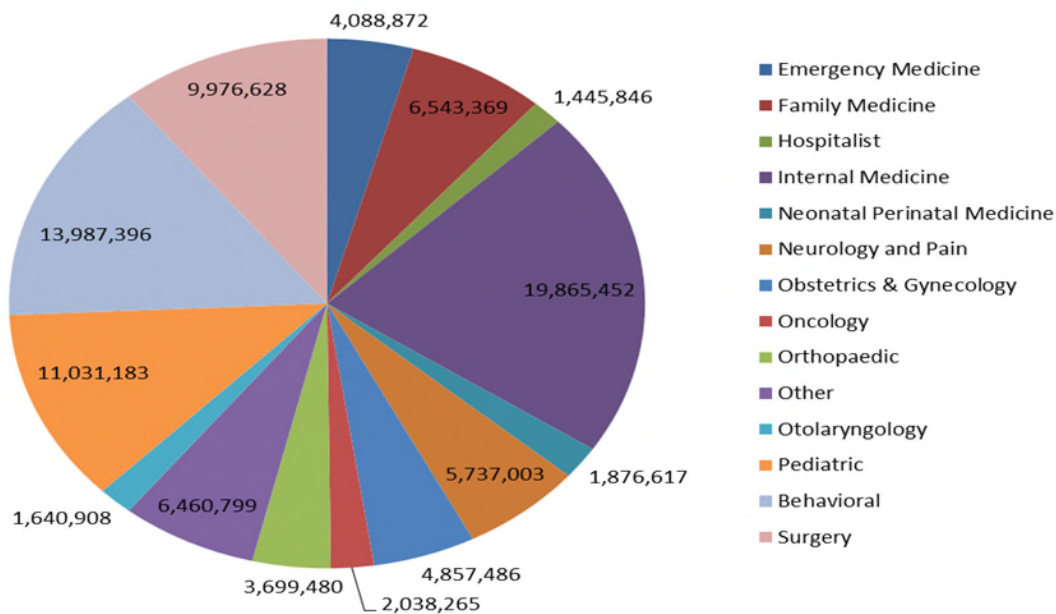
Medicaid	\$ 426,638,221
Medicare	216,412,211
Insurance	259,812,870
Other Patient	8,892,048
Bernalillo County mill levy	93,249,305
Other	59,026,402



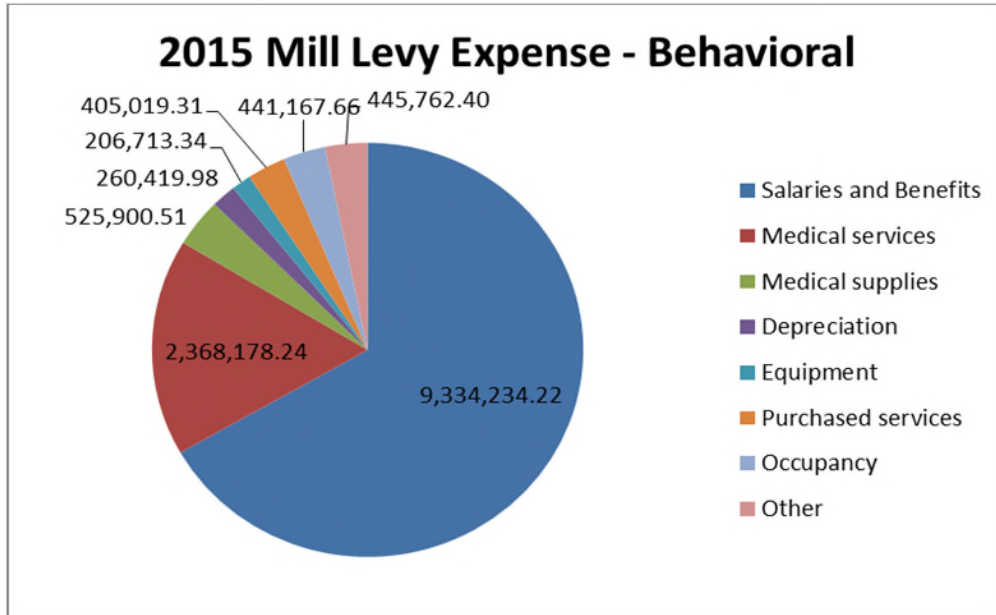
Salaries & Benefits	\$	38,517,434
Medical services		14,679,554
Medical supplies		12,665,038
Depreciation		3,012,249
Equipment		3,658,757
Purchased services		3,754,256
Occupancy		1,400,433
Pathways & MATS		1,135,718
Other		14,425,866
Total Expense	\$	93,249,305



2015 Mill Levy Expense by Specialty

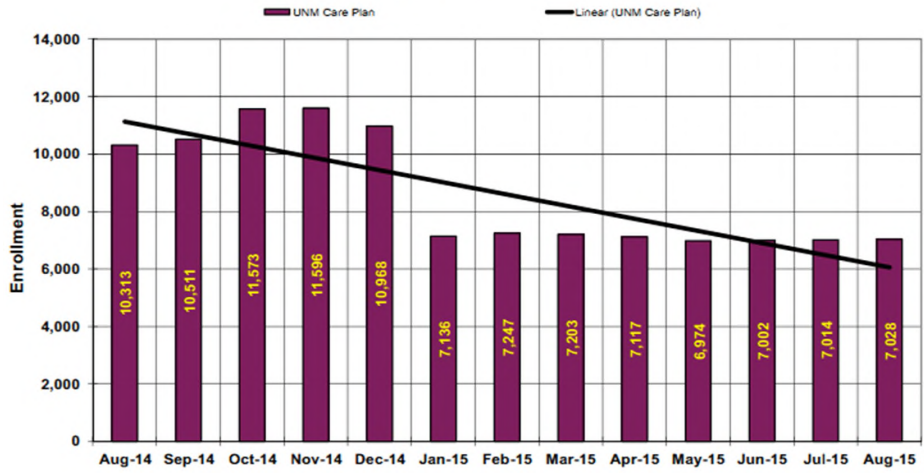


Emergency Medicine	\$	4,088,872
Family Medicine		6,543,369
Hospitalist		1,445,846
Internal Medicine		19,865,452
Neonatal Perinatal Medicine		1,876,617
Neurology and Pain		5,737,003
Obstetrics & Gynecology		4,857,486
Oncology		2,038,265
Orthopaedic		3,699,480
Other		6,460,799
Otolaryngology		1,640,908
Pediatric		11,031,183
Behavioral		13,987,396
Surgery		9,976,628
Total	\$	93,249,305



Salaries and Benefits	\$	9,334,234
Medical services		2,368,178
Medical supplies		525,901
Depreciation		260,420
Equipment		206,713
Purchased services		405,019
Occupancy		441,168
Other		445,762
Total Expense	\$	13,987,396

UNM Care Plan Monthly Enrollment
August 2014 through August 2015



Referrals to Collection Agency

